

Heavy Square Washer

Material: Stainless Steel

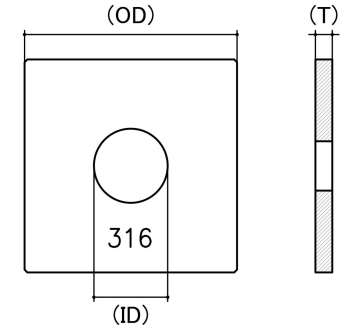
Class Grade: A4-70 G316

Corrosion Protection Level: Ultimate

Standard: HEC Standard

System Of Measurement: Metric

Comments: Washers are not precision items. Dimensional data should be used as a guide only.



*Cad Drawings shown for graphic representation only.**

Industry Size	Inside Dimension (ID) (mm)		Outside Dimension (OD) (mm)	Thickness (T) (mm)		sku (Part Number)
	Min	Max		Min	Max	
M10 x 50 x 50 x 3	10.70	11.70	50 x 50	2.60	3.00	71HSS1050503M
M12 x 50 x 50 x 3	13.10	14.20	50 x 50	2.60	3.00	71HSS1250503M
M16 x 50 x 50 x 5	16.80	18.60	50 x 50	4.30	5.00	71HSS1650505M
M20 x 50 x 50 x 5	21.00	22.00	50 x 50	4.30	5.00	71HSS2050505M
M24 x 75 x 75 x 6	25.00	26.00	75 x 75	5.50	6.00	71HSS2475756M

Disclaimer:

Dimensional data and technical information was obtained from publically available sources and not acquired through standard agencies. It has been completed and compiled for reference purposes only; where discrepancies are found they are subject to change without notice. Bolt & Nut Australia makes no warranties or representations regarding the accuracy and validity of the compiled information and data. Contact the relevant standard authorities for accurate and detailed information.

* Cad Drawings may not reflect diameter, thread length or overall length.

© Bolt & Nut Australia Pty Ltd. All rights reserved.

Version: 09 Aug 2024